

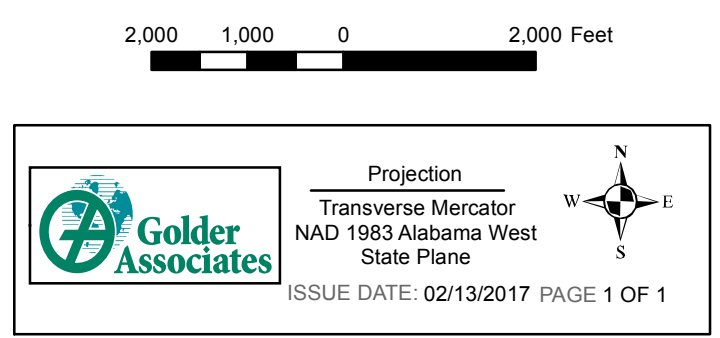
Notes

1. This map depicts the maximum water surface elevation from breaching the southeast and western sides of the embankment.

2. Mapping of flooded areas and flood wave travel times are approximate and should be used as a guidance for establishing evacuation zones.

3. Actual areas inundated will depend on failure mode and pre-failure hydrologic conditions and may differ significantly from information shown on these maps.

PLANT GREENE COUNTY ASH POND DAM BREACH ANALYSIS GREENE COUNTY, ALABAMA



West Breach Point Summary												
Point	Sunny Day Breach						Storm in Progress Breach					
	Distance from Breach (miles)	Arrival Time (HH:MM)	Time to Peak (HH:MM)	River Stage Elevation (ft-msl)	Maximum Water Surface Elevation (ft-msl)	Maximum Water Depth (ft)	Distance from Breach (miles)	Arrival Time (HH:MM)	Time to Peak (HH:MM)	River Stage Elevation (ft-msl)	Maximum Water Surface Elevation (ft-msl)	Maximum Water Depth (ft)
AA	0.5	00:45	01:35	78.8	82.6	3.8	0.5	00:50	01:45	78.8	83.0	4.2
BB	1.0	01:45	01:55	76.7	82.1	5.4	1.0	01:45	02:30	76.7	83.5	6.8
CC	1.5	02:15	02:30	74.6	79.5	4.9	1.5	02:15	03:00	74.6	82.1	7.5
DD	2.0	02:50	03:25	73.1	78.6	5.5	2.0	02:50	03:45	73.1	81.3	8.2
EE	2.5	03:40	04:30	73.1	76.8	3.7	2.5	03:35	04:10	73.1	79.9	6.8
FF	3.0	04:20	05:00	73.1	75.3	2.2	3.0	04:20	05:15	73.1	79.6	6.5
GG	3.0	04:20	05:00	73.1	75.3	2.2	3.0	04:20	05:15	73.1	79.6	6.5

East Breach Point Summary												
Point	Sunny Day Breach						Storm in Progress Breach					
	Distance from Breach (miles)	Arrival Time (HH:MM)	Time to Peak (HH:MM)	River Stage Elevation (ft-msl)	Maximum Water Surface Elevation (ft-msl)	Maximum Water Depth (ft)	Distance from Breach (miles)	Arrival Time (HH:MM)	Time to Peak (HH:MM)	River Stage Elevation (ft-msl)	Maximum Water Surface Elevation (ft-msl)	Maximum Water Depth (ft)
HH	0.5	00:20	01:10	73.1	76.0	2.9	0.5	00:20	01:30	73.1	79.3	6.2
II	1.0	00:35	01:50	73.1	75.3	2.2	1.0	00:35	01:55	73.1	79.4	6.3
JJ	1.5	00:50	02:15	73.1	75.1	2.0	1.5	00:50	02:25	73.1	79.4	6.3
KK	2.0	01:05	02:40	73.1	75.0	1.9	2.0	01:05	03:00	73.1	79.5	6.4
LL	0.5	00:15	01:05	73.1	75.9	2.8	0.5	00:15	1:35	73.1	79.2	6.1
MM	1.0	00:35	01:50	73.1	75.3	2.2	1.0	00:35	2:00	73.1	79.1	6.0
NN	1.5	00:50	02:10	73.1	75.2	2.1	1.5	00:50	2:30	73.1	79.1	6.0
OO	2.0	01:15	02:35	73.1	75.1	2.0	2.0	01:15	03:05	73.1	79.1	6.0